

Goldbug News



WHAT'S IN THIS MONTH'S ISSUE:

- Learning Without Limits
- MS Buildingwide Spelling Bee
- Choir Concert
- HS Sports Scene
- Valentines Spirit Week
- Announcements



Learning Without Limits: Goldbugs Stay on Track Despite Winter Challenges

This winter has brought its share of challenges, yet the Goldbugs have remained steadfast in their pursuit of academic excellence. Despite the transition to Alternate Methods of Instruction (AMI) days, we saw some of our highest levels of student engagement. This success is a testament to our dedicated teachers, who designed innovative and engaging lessons, our students' commitment to learning, and the unwavering support of our parents.

Our faculty's outstanding efforts were even recognized by the St. Louis Post-Dispatch, highlighting their creativity in delivering virtual instruction. While we continue refining our structures for AMI days, it is clear that our students adapted well and maintained their academic progress.

That said, while learning from home was a success, nothing compares to being back in the classroom, where the real magic of education happens. Thank you to everyone who contributed to making our AMI days effective and meaningful!



Middle School Bee

WORDS OF CHAMPIONS: MCKINLEY WINNER HEADS TO REGIONALS

After a series of preliminary rounds designed to build excitement and enthusiasm, our school-wide spelling bee finalists had the opportunity to showcase their skills and compete for a spot in the Regional Competition at Saint Louis University.

Congratulations to our 6th-grade finalists: Axel, Juniper, Evelyn, and alternate Julian.

Congratulations to our 7th-grade finalists: Andrew, Miles, Jesiah, and alternate Hayden.

Congratulations to our 8th-grade finalists: Samantha, Gabriel, Seamus, and alternate Adam.

A special congratulations to our overall winner, Samantha!

We are incredibly proud of our Goldbugs for demonstrating their dedication and excellence. Best of luck to our overall winner at Regionals!





Fall Choir Concert

Music, Talent, and Community: A Stunning Fall Choir Performance



McKinley Classical Leadership Academy shined brightly during the Fall Choir Concert, thanks to the incredible talents of our Goldbugs. Under the leadership of Ms. Nuebling, students delivered a spectacular performance in a production that captivated the audience.

With a packed auditorium and standing-room-only attendance, the energy was electric. The evening featured dynamic dance routines, powerful solos, and an overwhelming show of support from parents, families, and friends.

Thank you to everyone who contributed to making this event a resounding success!





HS Sports Scene

Celebrating Excellence: Senior Nights and Athletic Achievements at McKinley

This winter has brought its share of ups and downs for our McKinley athletes, but their dedication and perseverance have led to significant growth and improvement. They have learned to navigate challenges beyond their control while focusing on the areas where they can make a difference. Through fierce competition and the guidance of their coaches, our Goldbugs have continued to develop both athletically and mentally.

As ambassadors of McKinley, our athletes are expected to demonstrate exceptional leadership, and our high school athletes exemplified this by showing up to support our middle school boys' and girls' teams.

We also invite you to join us in celebrating our senior athletes at their upcoming Senior Nights:

- **Girls' Basketball Senior Night – Tonight at 4:30 PM at McKinley**, as the team takes on Roosevelt. Don't miss this exciting moment as our star senior, Amirah, aims to reach 1,000 career points!
- **Boys' Basketball Senior Night – Wednesday, February 12, 2025**, at McKinley. The junior varsity game starts at 4:30 PM, followed by varsity at 6:00 PM.

We look forward to seeing you there to cheer on the Goldbugs!



Announcements



STUDENT ID NOTICE

In the interest of maintaining a safe and secure school environment, we want to remind our parents and school community about our mandatory policy requiring all students to wear their school ID at all times while on campus.

It has always been an expectation that students carry their ID daily. Recently, we have observed during morning intake and throughout the day that some students are either not wearing their ID or do not have it with them.

Each student was issued an ID at the beginning of the school year. If a student no longer has their ID, they should visit the library for a replacement. The first replacement ID will be provided free of charge. After that, any additional replacements will cost \$5 to cover the materials needed for reissuing IDs.

Between now and Winter Break, we will focus on ensuring alignment with this policy to make it a seamless practice. When we return, we aim to fully implement this expectation and avoid any challenges for students who are not in compliance.

Thank you for your support in helping us maintain a safe and orderly school environment. If you have any questions, please feel free to reach out.

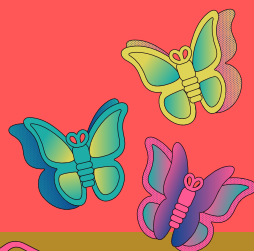
MS VALENTINES SPIRIT WEEK

Monday 2/10
Little White Lies: Students may wear a white shirt with a false statement about themselves on their shirt.

Tuesday 2/11
Bardie v. Ken: Students may either dress as Barbie or Ken

Wednesday 2/12
Mathlete or Athlete Day: Students may dress like an athlete or as a mathlete.

Thursday 2/13
Cupid's Attire: Students can dress in either Valentines attire or red, white or pink clothing in honor of the hol



Announcements



PANORAMA SURVEY!

Each year, we invite all members of the McKinley community to share their feedback on our school's culture and climate through the Panorama Survey. This valuable tool helps us gain insight into parent perspectives, identify areas for growth, and celebrate the aspects of McKinley that are thriving.

Your input allows us to address concerns and strengthen our efforts to create a warm, welcoming, and supportive environment for all. Please take a moment to complete the survey using the link below—your feedback is essential to our continued improvement.

Thank you for your support and commitment to McKinley!



SURVEYS.PANORAMAED.COM/STLOUIS/FAMILYWINTER2025/SURVEYS SURVEY!

If you have any trouble accessing or completing the survey please contact Panorama directly: support+stlouis@panoramaed.com

Welcome

